


Index:

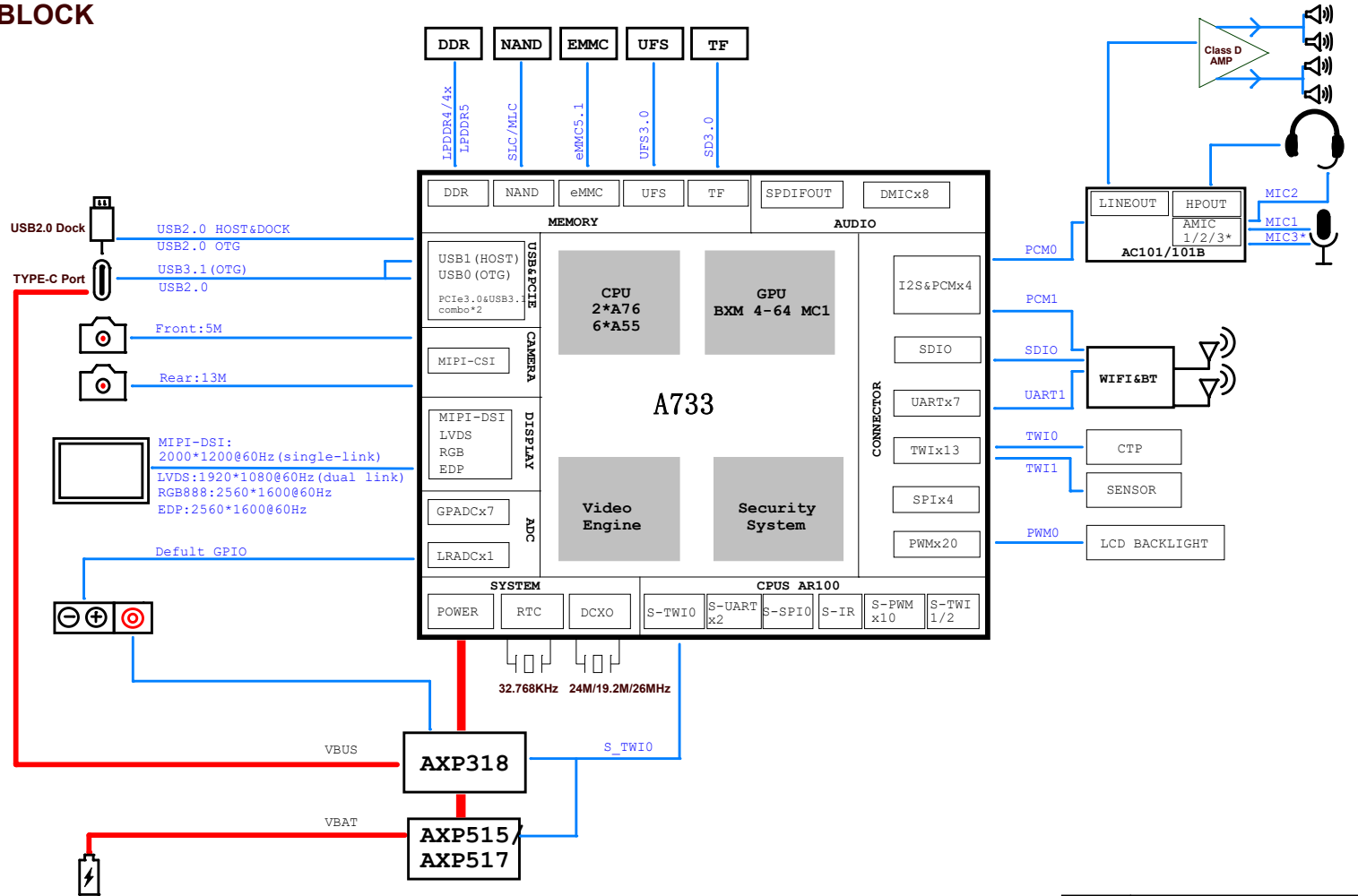
Description

Note

Option

	SZBRAIJIE Technology Co., Ltd		
	Design Name		
	HelperA733C		
	Size	Page Name	Version
	A3	01 VERSION HISTORY	V1.2
	Date:	Friday, September 19, 2025	Sheet 01 of 12

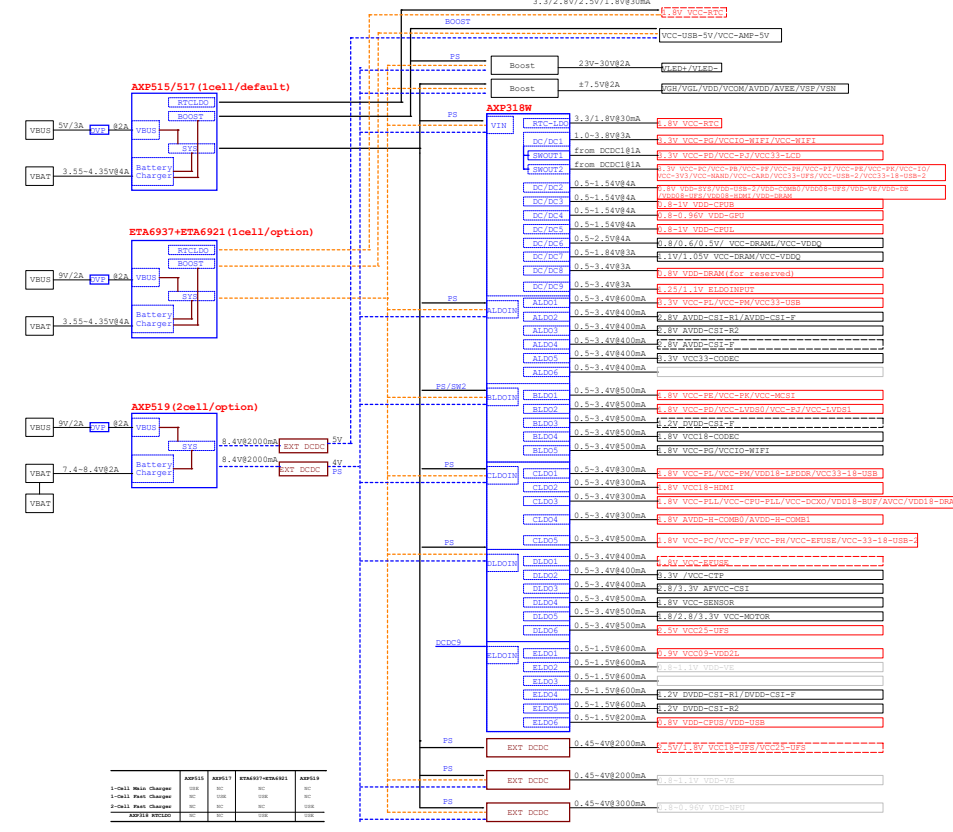
BLOCK

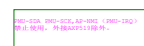


POWER TREE

■ DEFAULT POWER ON

■ DEFAULT POWER OFF





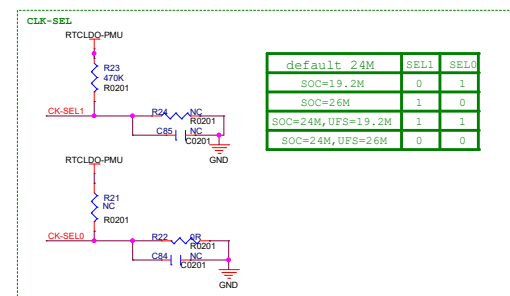
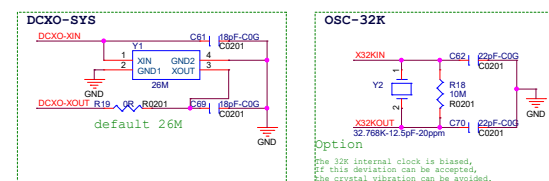
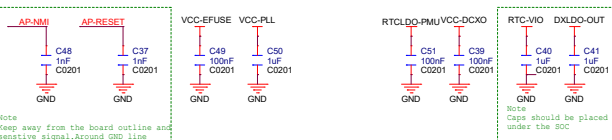
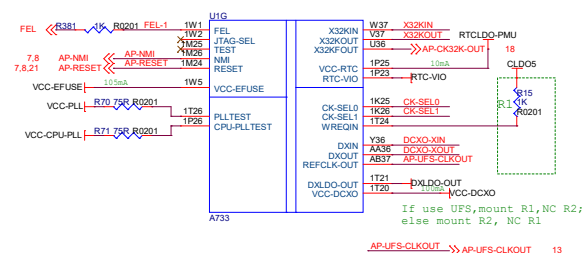
GPIO ASSIGNMENT

GPIO	Default	Function1
PB0	PB0	JTAG-MS
PB1	PB1	JTAG-CK
PB2	PB2	JTAG-DO
PB3	PB3	JTAG-DI
PB4	I2S0-MCLK	
PB5	I2S0-BCLK	
PB6	I2S0-LRCK	
PB7	I2S0-DOU0	
PB8	I2S0-DINO	
PB9	TWI0-SCK	UART0-TX
PB10	TWI0-SDA	UART0-RX
PC0	SDC2-DS	
PC1	SDC2-RST	
PC2		
PC3		
PC4		
PC5	SDC2-CLK	
PC6	SDC2-CMD	
PC7		
PC8	SDC2-D3	
PC9	SDC2-D4	
PC10	SDC2-D0	
PC11	SDC2-D5	
PC12		
PC13	SDC2-D1	
PC14	SDC2-D6	
PC15	SDC2-D2	
PC16	SDC2-D7	
PD0	DSIO-D0P	
PD1	DSIO-D0N	
PD2	DSIO-D1P	
PD3	DSIO-D1N	
PD4	DSIO-CKP	
PD5	DSIO-CKN	
PD6	DSIO-D2P	
PD7	DSIO-D2N	
PD8	DSIO-D3P	
PD9	DSIO-D3N	
PD10	SPI1-CS0	
PD11	SPI1-CLK	
PD12	SPI1-MOSI	
PD13	SPI1-MISO	
PD14	PD14	
PD15	SPI1-CS1	
PD16	TWI2-SCK	
PD17	TWI2-SDA	
PD18	PD17	
PD19	PD18	
PD20	PD19	
PD21	PD20	
PD22	PD21	
PD23	PWM0-5	

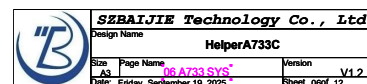
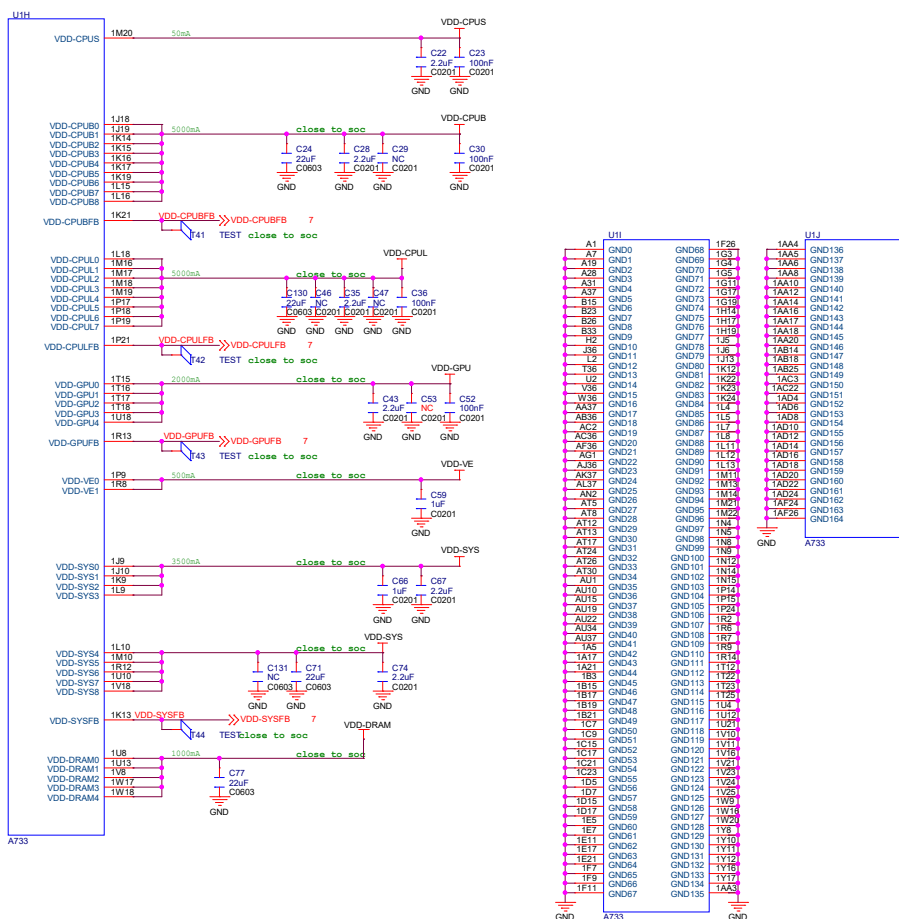
GPIO	Default	Function1
PE0		
PE1		
PE2		
PE3	TWI3-SCK	
PE4	TWI3-SDA	
PE5	MCSI1-MCLK	
PE6		
PE7		
PE8		
PE9		
PE10		
PE11		
PE12	PE14	
PE13	PE15	
PE14	PE16	
PE15	PE17	
PF0	SDC0-D1	
PF1	SDC0-CMD	
PF2	SDC0-CLK	
PF3	SDC0-D0	
PF4	SDC0-D3	
PF5	SDC0-D2	
PF6	SDC0-DET	
PG0	SDC1-CLK	
PG1	SDC1-CMD	
PG2	SDC1-D0	
PG3	SDC1-D1	
PG4	SDC1-D2	
PG5	SDC1-D3	
PG6	UART1-TX	
PG7	UART1-RX	
PG8	UART1-RTS	
PG9	UART1-CTS	
PG10		
PG11	I2S1-BCLK	
PG12	I2S1-LRCK	
PG13	I2S1-DOU0	
PG14	I2S1-DINO	
PH0		
PH1	PH1	
PH2	TWI1-SCK	
PH3	TWI1-SDA	
PH4	PH4	
PH5	PH5	
PH6	PH6	
PH7	PH7	
PH8	PH8	
PH9	PH9	
PH10	PH10	
PH11	PH11	
PH12		
PH13		
PH14	PH14	
PH15	BOARD-ID-SEL-GPIO	
PH16	DDR-PARA-SEL-GPIO	

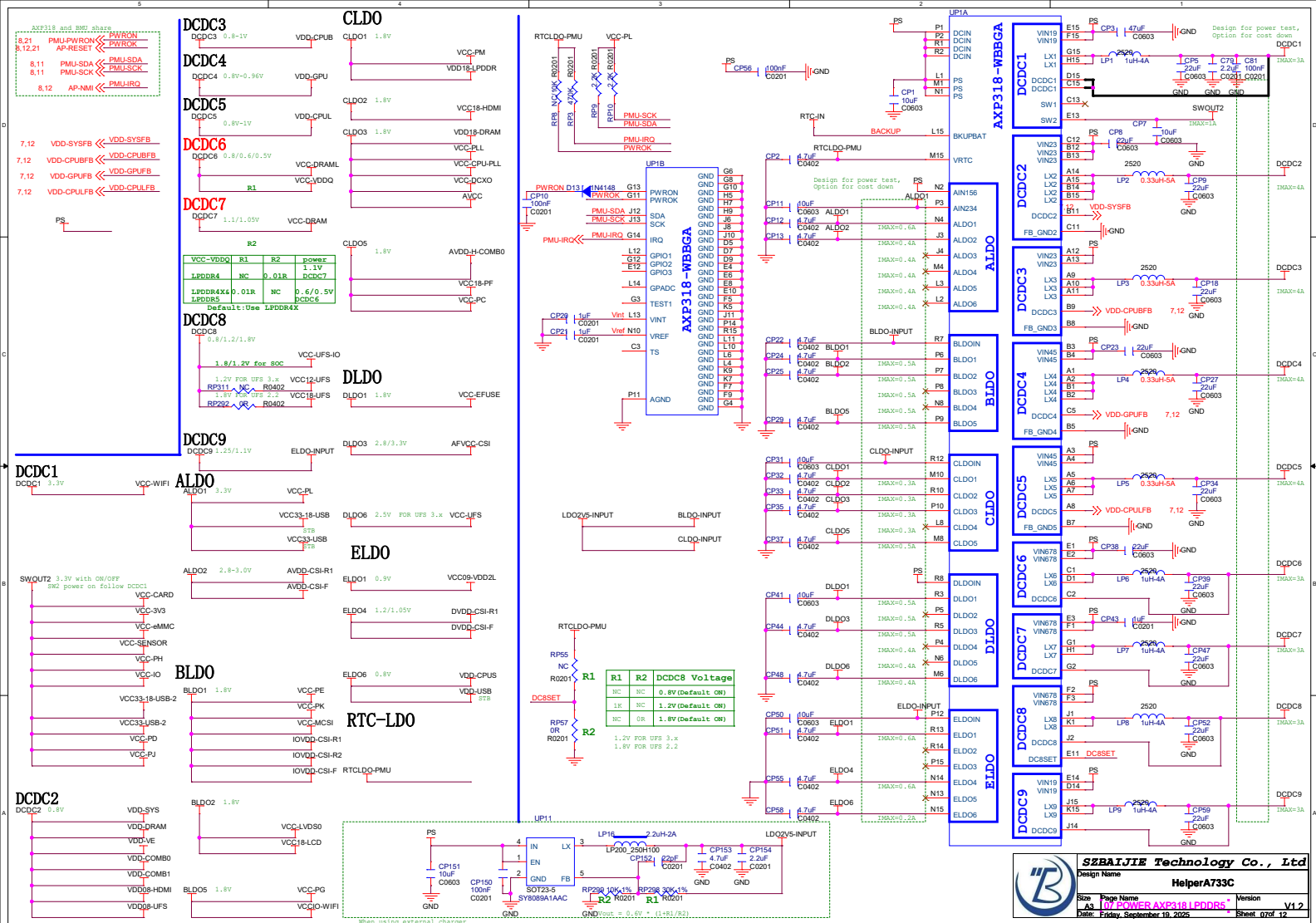
GPIO	Default	Function1
PJ22		
PJ23		
PJ24		
PJ25		
PJ26		
PJ27		
PK0		
PK1		
PK2		
PK3		
PK4		
PK5		
PK6		
PK7		
PK8		
PK9		
PK10	MCSIB-D0N	
PK11	MCSIB-D0P	
PK12	MCSIB-D1N	
PK13	MCSIB-D1P	
PK14	MCSIB-CKN	
PK15	MCSIB-CKP	
PK16	MCSIB-D2N	
PK17	MCSIB-D2P	
PK18	MCSIB-D3N	
PK19	MCSIB-D3P	
PK20	MCSIC-D0N	
PK21	MCSIC-D0P	
PK22	MCSIC-D1N	
PK23	MCSIC-D1P	
PK24	MCSIC-CKN	
PK25	MCSIC-CKP	
PL0	S-TWI0-SCK	
PL1	S-TWI0-SDA	
PL2	PL2	S-UART1-TX
PL3	PL3	S-UART1-RX
PL4	PL4	S-JTAG-MS
PL5	PL5	S-JTAG-CK
PL6	PL6	S-JTAG-DO
PL7	PL7	S-JTAG-DI
PL8	PL8	
PL9	PL9	
PL10		
PL11		
PL12		
PL13		
PM0	PM0	
PM1	PM1	
PM2	PM2	
PM3	PM3	
PM4	PM4	
PM5	PM5	

SYS



CORE POWER





UFS

VCC-UFS 600mA
VCC18-UFS 600mA
VCC12-UFS 900mA
DXLDO-OUT
VCC-UFS
VCC-IO
CLDO5
VCC-UFS-IO 500mA

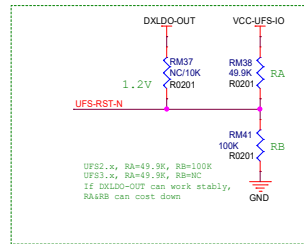
10 UFS-RX1-P UFS-RX1-P
10 UFS-RX1-N UFS-RX1-N
10 UFS-RX0-P UFS-RX0-P
10 UFS-RX0-N UFS-RX0-N
10 UFS-TX1-P UFS-TX1-P
10 UFS-TX1-N UFS-TX1-N
10 UFS-TX0-P UFS-TX0-P
10 UFS-TX0-N UFS-TX0-N
10 UFS-RST-N UFS-RST-N
12 AP-UFS-CLKOUT AP-UFS-CLKOUT
10 UFS-CLK-AP UFS-CLK-AP
UFS-CLK-AP T117 test


OPTION1
AP-UFS-CLKOUT RM36 33K R2021 UFS-CLK-DV

UM2A
B8 VCC0
B9 VCC1
C8 VCC2
C9 VCC3
E8 VCC4
K8 VCC5
N8 VCC6
N9 VCC7
P8 VCC8
P9 VCC9
A4 VCCQ_0
B4 VCCQ_1
B5 VCCQ_2
C4 VCCQ_3
C5 VCCQ_4
E5 VCCQ_5
F5 VCCQ_6
F6 VCCQ_7
A6 VCCQ2-0
B6 VCCQ2-1
B7 VCCQ2-2
C6 VCCQ2-3
C7 VCCQ2-4
K6 VCCQ2-5
K7 VCCQ2-6
K8 VCCQ2-7
A9 VDD1
A3 VDD0
A8 VDDIQ2
B2 VSS0
B12 VSS1
C1 VSS2
C2 VSS3
C3 VSS4
C11 VSS5
C12 VSS6
D3 VSS7
D12 VSS8
D13 VSS9
D14 VSS10
E1 VSS11
E2 VSS12
E3 VSS13
E4 VSS14
E5 VSS15
VSS61 P12
VSS60 P11
VSS59 P10
VSS58 P9
VSS57 P8
VSS56 P7
VSS55 P6
VSS54 P5
VSS53 P4
VSS52 P3
VSS51 P2
VSS50 P1
VSS49 P0
VSS48 P0
VSS47 P0
VSS46 P0
VSS45 P0
VSS44 P0
VSS43 P0
VSS42 P0
VSS41 P0
VSS40 P0
VSS39 P0
VSS38 P0
VSS37 P0
VSS36 P0
VSS35 P0
VSS34 P0
VSS33 P0
VSS32 P0
VSS31 P0
VSS30 P0
VSS29 P0
VSS28 P0
VSS27 P0
VSS26 P0
VSS25 P0
VSS24 P0
VSS23 P0
VSS22 P0
VSS21 P0
VSS20 P0
VSS19 P0
VSS18 P0
VSS17 P0
VSS16 P0
VSS15 P0

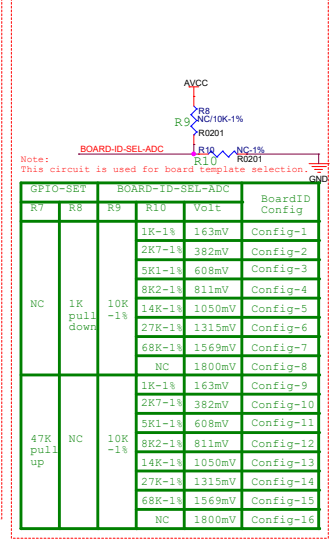
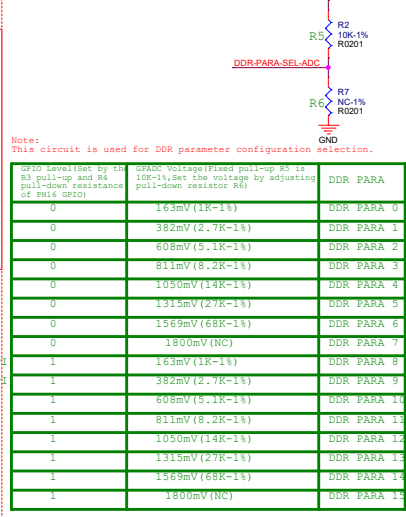
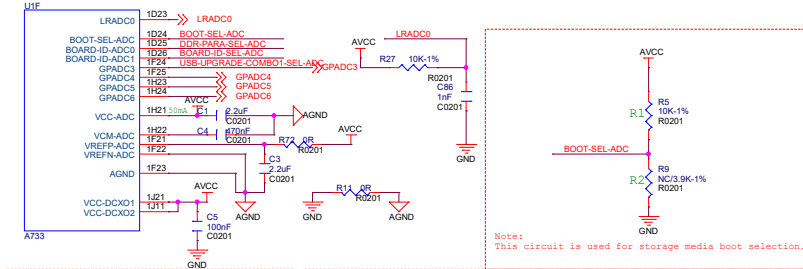
UM2B
P7 RFU22
P6 RFU21
P3 RFU20
P3 RFU19
P3 RFU18
P3 RFU17
P3 RFU16
P3 RFU15
P3 RFU14
P3 RFU13
P3 RFU12
P3 RFU11
P3 RFU10
P3 RFU9
P3 RFU8
P3 RFU7
P3 RFU6
P3 RFU5
P3 RFU4
P3 RFU3
P3 RFU2
P3 RFU1
P3 VSF8
P3 VSF7
P3 VSF6
P3 VSF5
P3 VSF4
P3 VSF3
P3 VSF2
P3 VSF1
P3 VSF0
NC16 P14
NC15 P13
NC14 P12
NC13 P11
NC12 P10
NC11 P9
NC10 P8
NC9 P7
NC8 P6
NC7 P5
NC6 P4
NC5 P3
NC4 P2
NC3 P1
NC2 P0
NC1 P0
NC0 P0
C- AT2
C+ AT2
CP0UT2 B10
CP0UT1 A10
M2 UFS-RX1-P
M1 UFS-RX1-N
K2 UFS-RX0-P
K1 UFS-RX0-N
D1 UFS-TX1-P
D2 UFS-TX1-N
E1 UFS-TX0-P
F2 UFS-TX0-N
H1 UFS-CLK-DV
H2 UFS-RST-N
REF CLK RST_N

DXLDO-OUT
VCC-UFS-IO
1.2V
UFS-RST-N
UFS2.x, RA=49.9K, RB=100K
UFS3.x, RA=49.9K, RB=100K
If DXLDO-OUT can work stably,
RA&RB can cost down

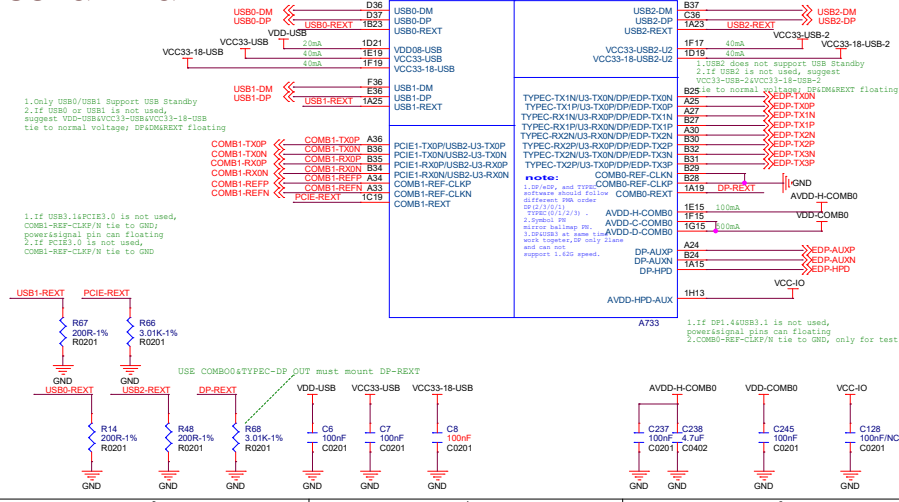


	SZBAIJIE Technology Co., Ltd		
	Design Name HelperA733C		
	Size B	Page Name *08 UFS*	Version V1.2
	Date: Friday, September 19, 2025		Sheet 08 of 12

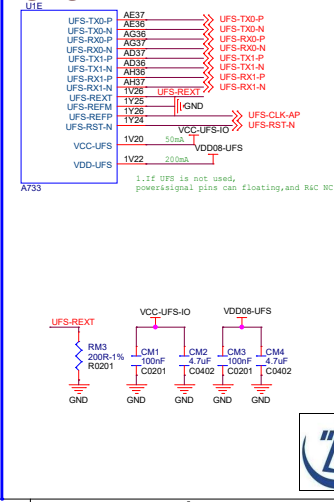
ADC



USB&EDP&PCIE



UFS



HDMI

